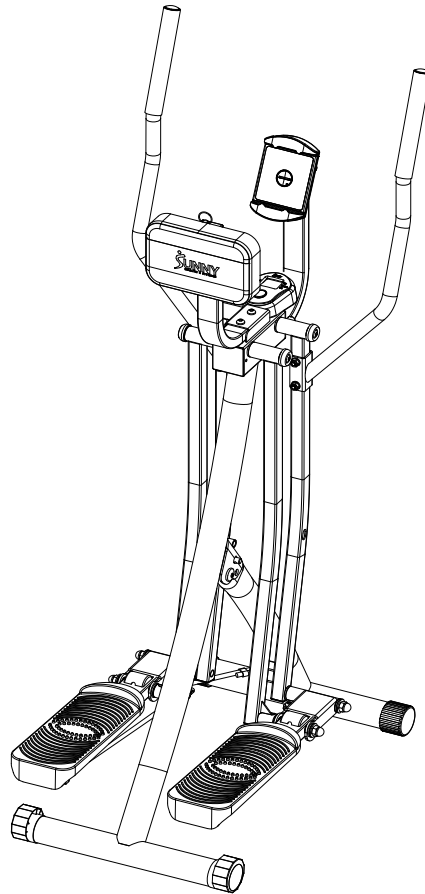




User Manual



Air Walk Trainer Pro

SF-E902S

EN

IMPORTANT! Please retain owner's manual for maintenance and adjustment instructions. Your satisfaction is very important to us, **PLEASE DO NOT RETURN UNTIL YOU HAVE CONTACTED US.**

Important Safety Information

We thank you for choosing our product. To ensure your safety and health, please use this equipment correctly. It is important to read this entire manual before assembling and using the equipment. Safe and effective use can only be achieved if the equipment is assembled, maintained, and used properly. It is your responsibility to ensure that all users of the equipment are informed of all warnings and precautions.

1. Before starting any exercise program, you should consult your physician to determine if you have any medical or physical conditions that could put your health and safety at risk or prevent you from using the equipment properly. Your physician's advice is essential if you are taking medication that affects your heart rate, blood pressure, or cholesterol level.
2. Be aware of your body's signals. Incorrect or excessive exercise can damage your health. Stop exercising if you experience any of the following symptoms: pain, tightness in your chest, irregular heartbeat, shortness of breath, lightheadedness, dizziness, or feelings of nausea. If you do experience any of these conditions, you should consult your physician before continuing with your exercise program.
3. Keep children and pets away from the equipment.
4. Use the equipment on a solid, flat level surface with a protective cover for your floor or carpet. To ensure safety, the equipment should have at least 2 feet (60 cm) of free space all around it.
5. Ensure that all nuts and bolts are securely tightened before using the equipment. The safety of the equipment can only be maintained if it is regularly examined for damage and/or wear and tear.
6. Always use the equipment as indicated. If you find any defective components while assembling or checking the equipment, or if you hear any unusual noises coming from the equipment during exercise, discontinue use of the equipment immediately and do not use until the problem has been rectified.
7. Wear suitable clothing while using the equipment. Avoid wearing loose clothing that may become entangled in the equipment.
8. Do not place fingers or objects into the moving parts of the equipment.
9. The maximum weight capacity of this unit is 220 lbs (100 kg).
10. The equipment is not suitable for therapeutic use.
11. To avoid bodily injury and/or damage to the product or property, proper lifting and moving are required.
12. Your product is intended for use in cool and dry conditions. You should avoid storage in extreme cold, hot or damp areas as this may lead to corrosion and other related problems.
13. This equipment is designed for indoor and home use only, it is not intended for commercial use.

Statement of Purpose

The Air Walk Trainer helps users get a full-body, low-impact workout by simulating a walking or gliding motion. It improves fitness, flexibility, and muscle tone without putting stress on the joints. Its compact design makes it easy to use at home and suitable for people of all fitness levels.

Waste Disposal



Sunny Health & Fitness products are recyclable. At the end of its useful life please dispose of this article correctly and safely (local refuse sites).

EU Declaration of Conformity

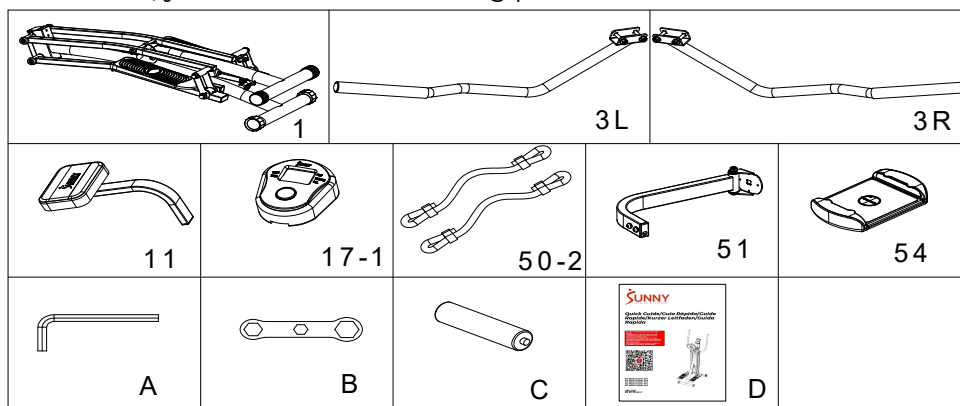
You can find the declaration of conformity at the following link:
<https://sunnyhealthfitness.com/pages/declaration-of-conformity>

Technical Data

Connectivity: Bluetooth LE
Frequency Range: 2400~2483.5 Mhz
Transmitting Power: 0 dBm

Pre-Assembly Checklist

When you open the carton, you will find the following parts:



No.	Description	Spec.	Qty.
1	Main Frame		1
3L	Left Handlebar		1
3R	Right Handlebar		1
11	Support Tube		1
17-1	Meter	JJD2601	1
50-2	Resistance Band		2

No.	Description	Spec.	Qty.
51	Device Holder Support Tube		1
54	Device Holder		1
A	Allen Key	S6	1
B	Wrench	S10-13-17	1
C	Battery	AA	2
D	User Manual		1

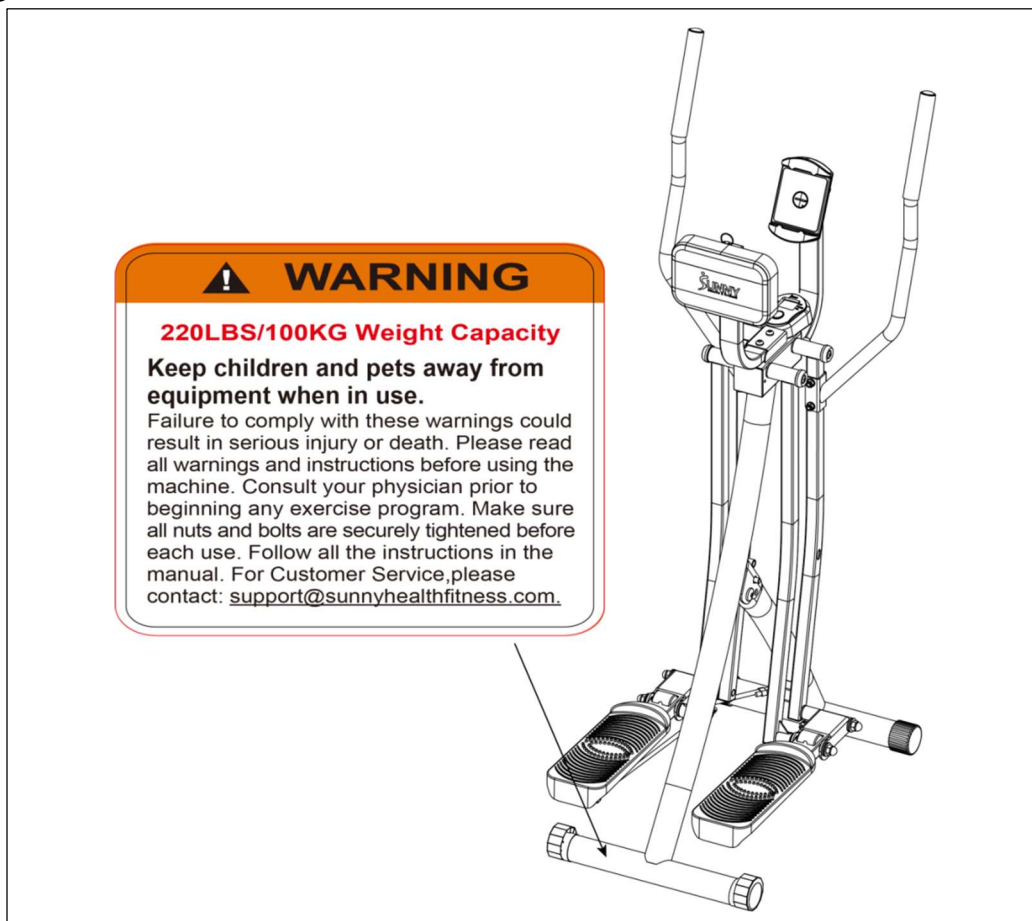
Ordering Replacement Parts

Please provide the following information in order for us to accurately identify the part(s) needed:

- ✓ The model number
- ✓ The product name
- ✓ The part number

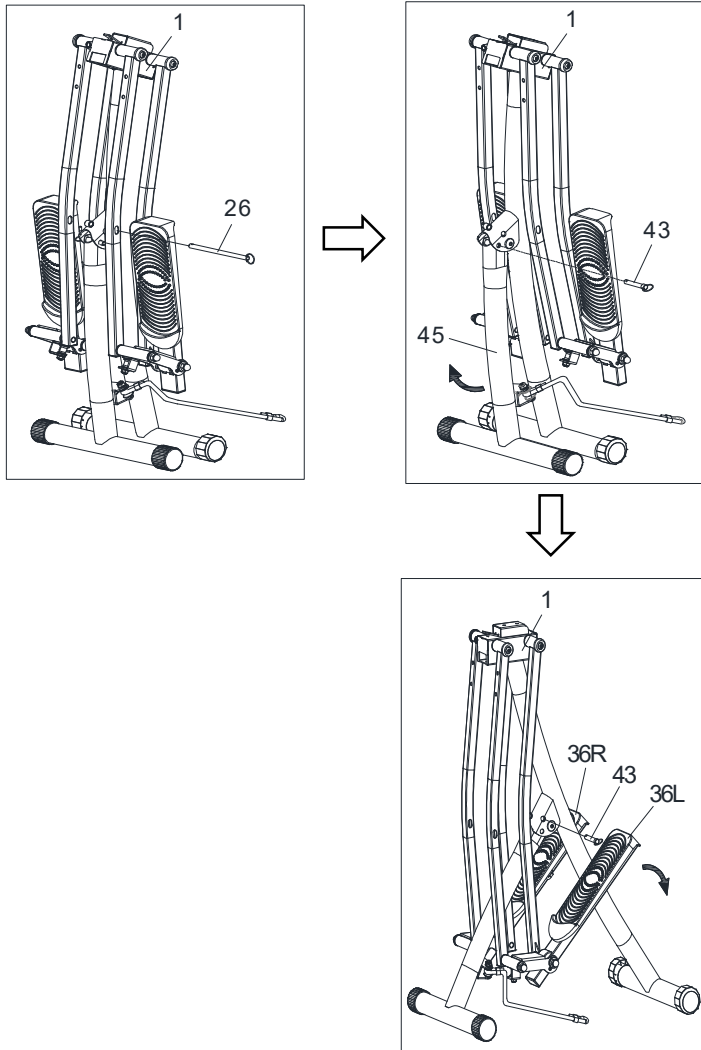
Please contact us at support@sunnyhealthfitness.com or 1-877-90SUNNY (877-907-8669).

Warning Labels



Assembly Instructions

We value your experience using Sunny Health and Fitness products. For assistance with parts or troubleshooting, please contact us at support@sunnyhealthfitness.com or 1-877-90SUNNY (877-907-8669).



STEP 1: Unfolding the Air Walker Trainer

Pull out the large **Ball Pin (No. 26)**, located half-way through the swing bars, to unlock the swing bars.

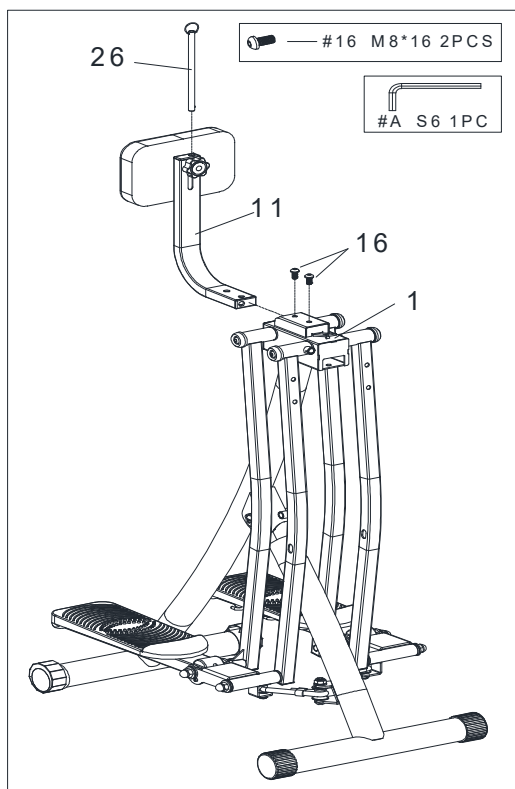
Pull out the **Ball Pin (No. 43)** located in the hinge where the two support tubes meet. This will unlock the **Connecting Tube (No. 45)** from the **Main Frame (No. 1)**.

Push the **Connecting Tube (No. 45)** away from the **Main Frame (No. 1)** or direction indicated by the arrow.

Reinsert the **Ball Pin (No. 43)** into the aligned holes on the hinge to secure the **Main Frame (No. 1)**.

NOTE: When **Connecting Tube (No. 45)** moved, the **Right Front Tube (No. 23)**, **Right Rear Tube (No. 24)**, **Left Rear Tube (No. 27)** and **Left Front Tube (No. 28)** will move as well. Be careful not to hurt your arms.

Unfold **Left Pedal Tube (No. 36L)** and **Right Pedal Tube (No. 36R)** to have the machine fully unfolded.



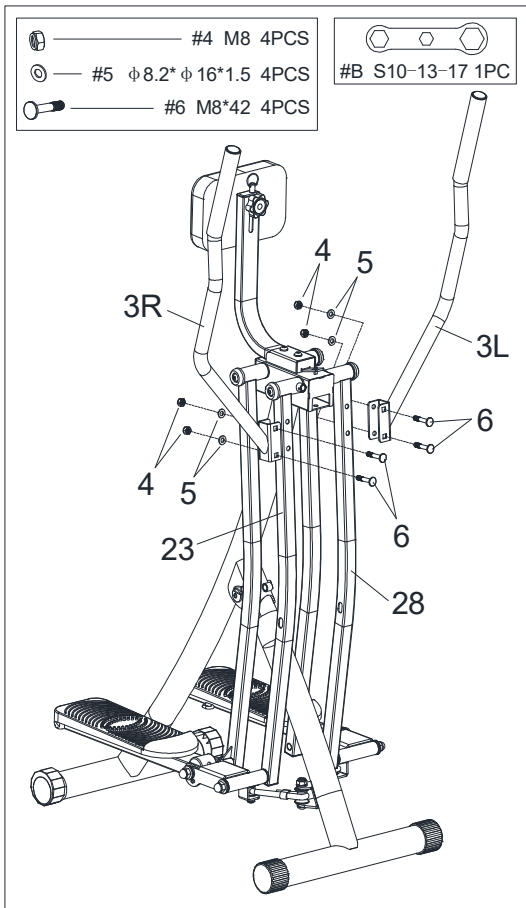
STEP 2: Attaching the Support Tube

Remove 2 **Allen Screws (No. 16)** From **Support Tube (No. 11)**.

Insert the **Support Tube (No. 11)** into the slot located at the top of the **Main Frame (No. 1)**.

Align the holes on the **Support Tube (No. 11)** with the holes on the slot. Insert two **Allen Screws (No. 16)** into each hole and use the **Allen Key (No. A)** to secure them.

Insert the **Ball Pin (No. 26)** into the top hole of the **Support Tube (No. 11)** for safe keeping.



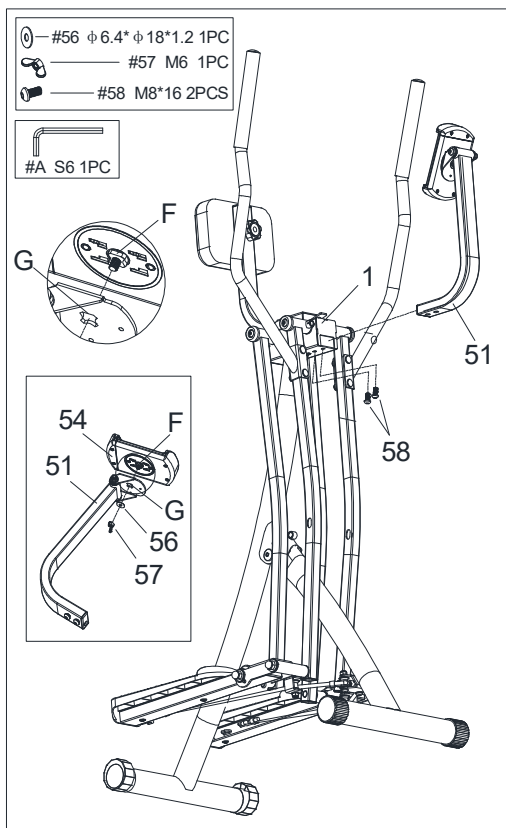
STEP 3:

Assembling the Handlebars

Remove 2 **Bolts (No. 6)**, 2 **Washers (No. 5)** and 2 **Nuts (No. 4)** from **Left Handlebar (No. 3L)**.

Make sure the square holes on each handlebar are facing outward, as shown on the left. Insert 2 **Bolts (No. 6)** making sure the square part of the bolts lock into the square holes on the **Left Handlebar (No. 3L)**. Place a **Washer (No. 5)** and a **Nut (No. 4)** on each **Bolt (No. 6)** and use **Wrench (No. B)** to secure the **Left Handlebar (No. 3L)** onto the **Left Front Tube (No. 28)**.

Use the same steps to secure the **Right Handlebar (No. 3R)** onto the **Right Front Tube (No. 23)**.



STEP 4:

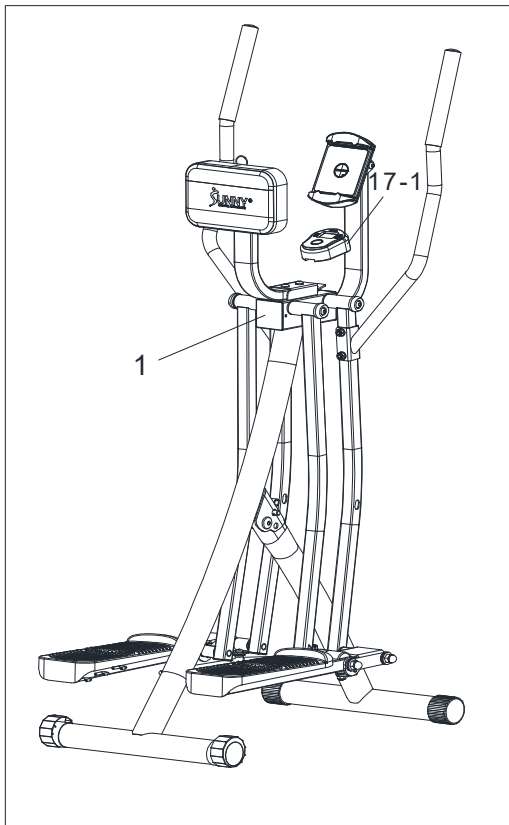
Assembling Device Holder

Unscrew the **Nut (No. 57)** and **Flat Washer (No. 56)** on the **Device Holder (No. 54)**. Attach the **Device Holder (No. 54)** to the **Device Holder Support Tube (No. 51)** by using the same **Nut (No. 57)** and **Flat Washer (No. 56)**.

NOTE: The gap (F) of the **Device Holder (No. 54)** and the gap (G) of the **Device Holder Support Tube (No. 51)** should be aligned.

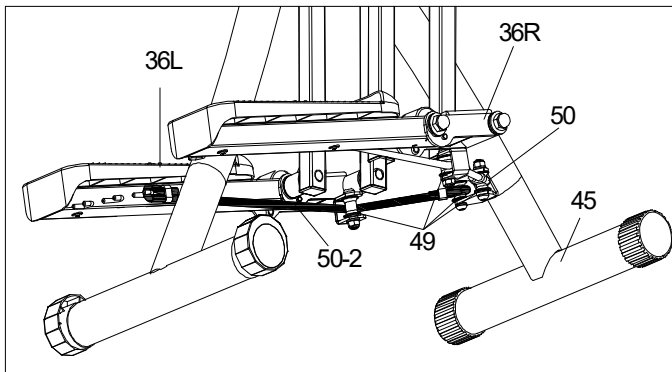
Remove 2 **Bolts (No. 58)** from **Device Holder Support Tube (No. 51)**.

Insert the **Device Holder Support Tube (No. 51)** into the **Main Frame (No. 1)**. Then secure it with 2 **Bolts (No. 58)** using an **Allen Key (No. A)**.



**STEP 5:
Attaching the Meter**

Slide the **Meter (No. 17-1)** onto the bracket located on the **Main Frame (No. 1)**.



**STEP 6:
Attaching the Resistance Band**

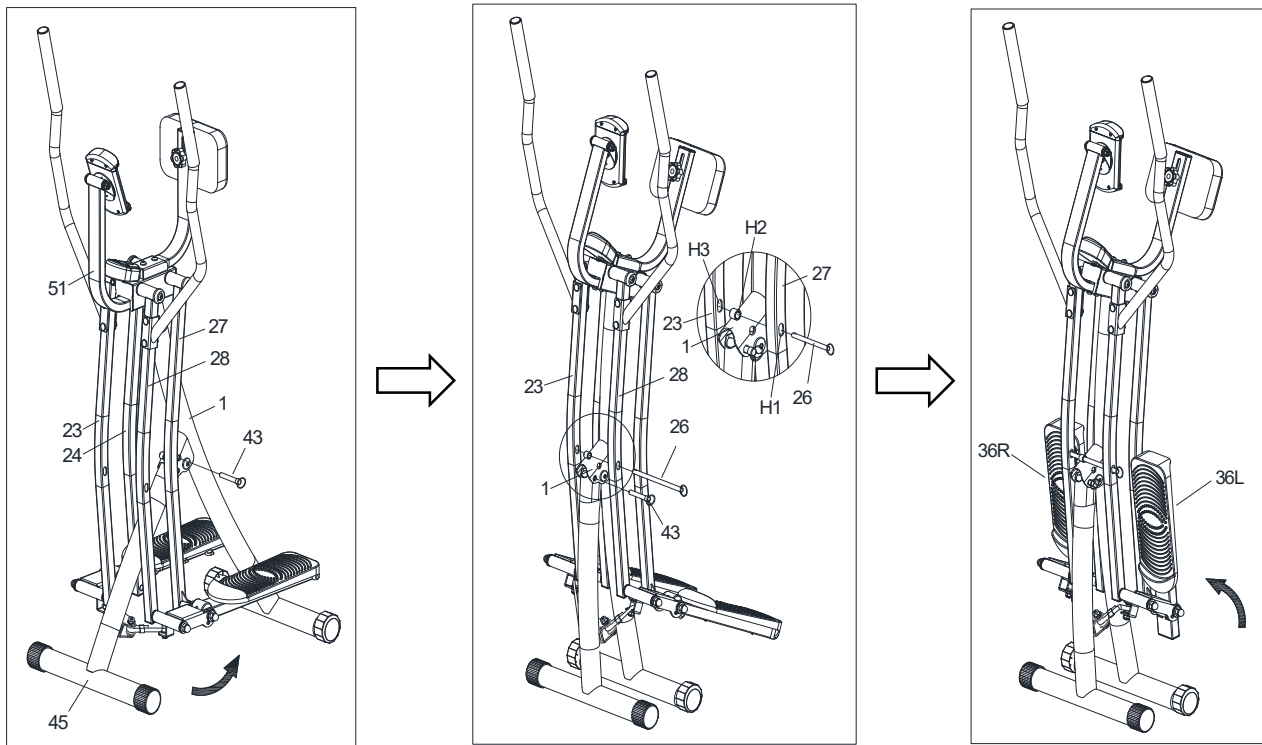
Pass the **Resistance Band (No. 50-2)** through the slot between the **Wheel (No. 49)** and the sheet metal under the **Left Pedal Tube (No. 36L)**, as shown by the arrow. (Show as the arrow). Continue connecting the end of the **Resistance Band (No. 50-2)** to the hook below the **Left Pedal Tube (No. 36L)**, as shown by the arrow.

Repeat this procedure for the right side.

NOTE: There are 3 hooks under the **Left Pedal Tube (No. 36L)** and **Right Pedal Tube (No. 36R)**. The hooks can be used to adjust the resistance according to your own needs.

The assembly is complete!

Folding Instructions



1. Take out the **Ball Pin (No. 43)** from the **Main Frame (No. 1)**. Hold the **Device Holder Support Tube (No. 51)**, then move the **Connecting Tube (No. 45)** toward the **Main Frame (No. 1)** as pictured.
NOTE: When **Connecting Tube (No. 45)** moved, the **Right Front Tube (No. 23)**, **Right Rear Tube (No. 24)**, **Left Rear Tube (No. 27)** and **Left Front Tube (No. 28)** will move as well. Be careful not to hurt your arms.
2. Insert **Ball Pin (No. 43)** into the folding hole of the **Main Frame (No. 1)**. Insert the **Ball Pin (No. 26)** into the hole H1 of the **Left Rear Tube (No. 27)**, the hole H2 of the **Main Frame (No. 1)** and the hole H3 of the **Right Front Tube (No. 23)** accordingly.
3. Fold the **Left Pedal Tube (No. 36L)** and the **Right Pedal Tube (No. 36R)** in the direction indicated by the arrows.
NOTE: After folding, it is recommended that the product be placed against the wall to prevent falling.

Using the Air Walker Trainer

PLACING YOUR FEET ON THE AIR WALKER TRAINER

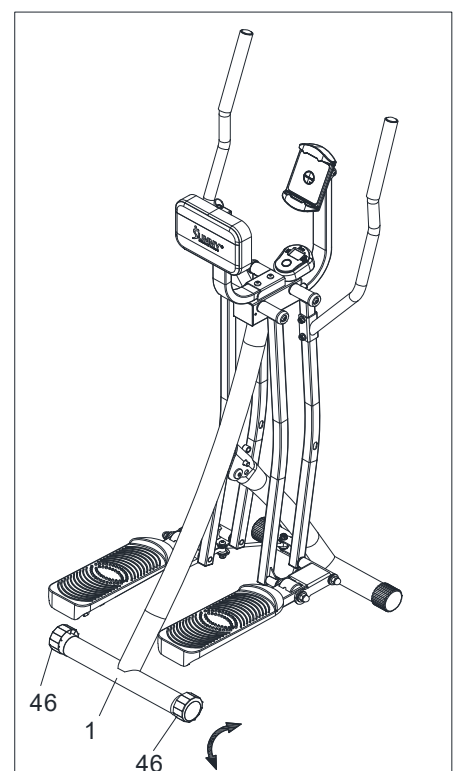
Stand behind the Air Walker Trainer with each hand holding one of the handlebars. Make sure to push and pull each handlebar prior to placing your feet on the foot pedals, to feel the tension and motion of the machine. Steadily hold the right handlebar as you place your right foot on the right pedal. Continue to steadily hold each of the handlebars as you balance on your right foot to lift your left foot and place it on the left pedal.

USING THE AIR WALKER TRAINER

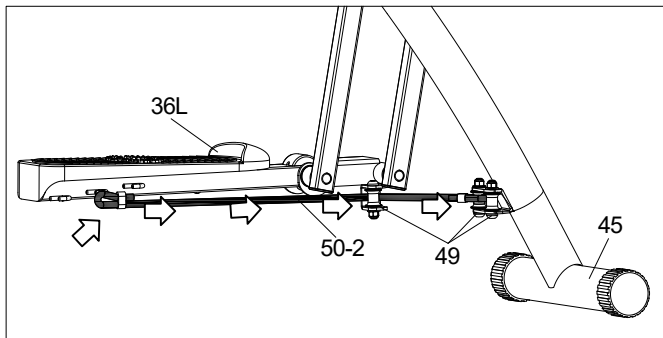
For optimal movement you will need to have a steady push and pull motion. As you push one arm, you will need to pull the other arm, in tandem, to create a steady walking motion on the machine. Make sure you are balanced and use smooth, controlled movements.

BALANCE ADJUSTMENT

Before using, check the balance of the product to ensure it is safe for use. Put the product on a flat, even surface. If the product is slightly uneven, rotate the **Adjustable Caps (No. 46)** on the **Main Frame (No. 1)** to compensate for the uneven ground.

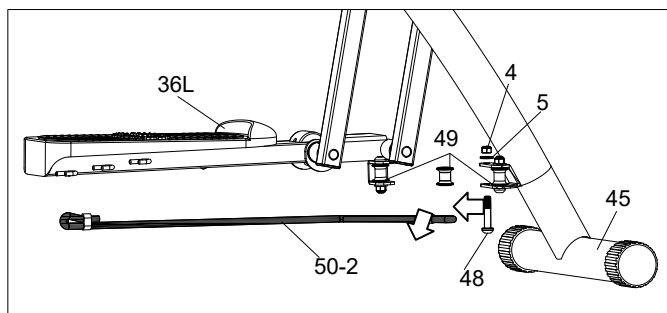


Replace the Resistance Band



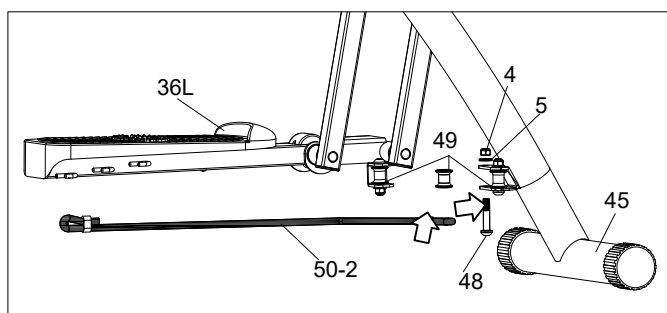
STEP 1:

Remove the end of the **Resistance Band (No. 50-2)** from the **Left Pedal Tube (No. 36L)**. Next, pass the **Resistance Band (No. 50-2)** through the slot between the sheet metal below the **Wheel (No. 49)** and the **Left Pedal Tube (No. 36L)**, as shown by the arrow.



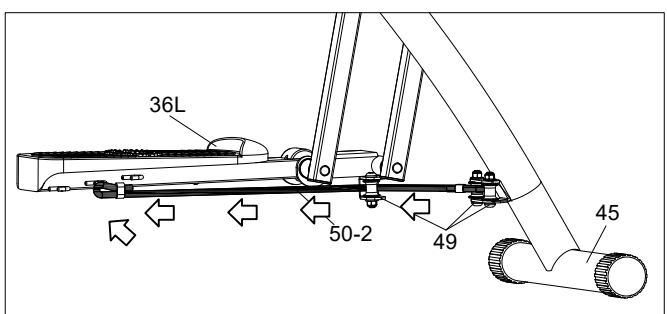
STEP 2:

Remove **Bolt (No. 48)**, **Washer (No. 5)** and **Nut (No. 4)** from **Connecting Tube (No. 45)** by using **Allen Key (No. A)** and **Wrench (No. B)**. Take out **Wheel (No. 49)** and **Resistance Band (No. 50-2)**, as shown by the arrow.



STEP 3:

Take out the new **Resistance Band (No. 50-2)** from the manual bag. Attach the **Wheel (No. 49)** and new **Resistance Band (No. 50-2)** back to the **Connecting Tube (No. 45)**. Use the **Allen Key (No. A)** and **Wrench (No. B)** to tighten **Bolt (No. 48)**, **Washer (No. 5)** and **Nut (No. 4)** back to the **Connecting Tube (No. 45)**, as shown by the arrow.



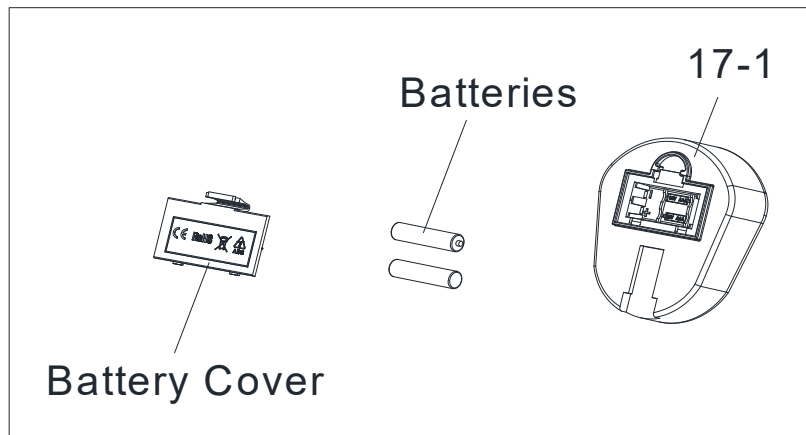
STEP 4:

Pass the new **Resistance Band (No. 50-2)** through the slot between the **Wheel (No. 49)** and the sheet metal under the **Left Pedal Tube (No. 36L)** as shown by the arrow. Then, connect the end of the new **Resistance Band (No. 50-2)** to the hook below the **Left Pedal Tube (No. 36L)**, as shown by the arrow.

Repeat this procedure (Step 1- Step 4) on the right side.

NOTE: There are 3 hooks under the **Left Pedal Tube (No. 36L)** and **Right Pedal Tube (No. 36R)**. The hooks can be used to adjust the resistance according to your own needs.

Battery Installation & Replacement



BATTERY INSTALLATION:

1. Press the buckle of the battery cover on the back of the **Meter (No. 17-1)** to remove battery cover.
2. Install 2 AA batteries into the battery case on the back of the **Meter (No. 17-1)**. Pay attention to the battery + and – ends before installing.
3. Press the buckle of the battery cover, then put the battery cover back to the back of the **Meter (No. 17-1)**.

The installation is complete!

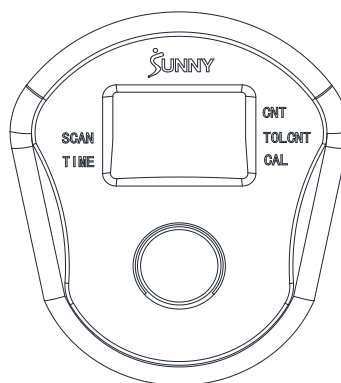
BATTERY REPLACEMENT:

1. Press the buckle of the battery cover on the back of the **Meter (No. 17-1)**, to remove the battery cover.
2. Remove the 2 old AA batteries in the battery case and install 2 new AA batteries into the battery case on the back of the **Meter (No. 17-1)**. Pay attention to the battery + and – ends before installing.
3. Press the buckle of the battery cover, then put the battery cover back to the back of the **Meter (No. 17-1)**.

The replacement is complete!

NOTE: Always change both batteries at the same time. Do not mix battery types and do not mix old and new batteries. Dispose batteries according to your state and regional guidelines.

Exercise Meter



BLUETOOTH



1. The Bluetooth icon will flash when the meter is on or wakes from sleep mode. If no Bluetooth connection is established within 3 minutes, the Bluetooth icon will turn off.
2. The Bluetooth icon will stay on when it is connected.

WIRELESS HEART RATE



1. The wireless heart rate icon will flash when the meter is on. If the heart rate monitor is not connected within 1 minute, the wireless heart rate icon will turn off.
2. After exercise resumes, the wireless heart rate icon will flash. If the heart rate monitor is not connected within 1 minute, the wireless heart rate icon will turn off.
3. When the meter wakes from sleep mode, the wireless heart rate icon will flash. If the heart rate monitor is not connected within 1 minute, the wireless heart rate icon will turn off.
4. The wireless heart rate icon will flash when the MODE key is pressed. If the heart rate monitor is not connected within 1 minute, the wireless heart rate icon will turn off.
5. The wireless heart rate icon will stay on when the heart rate monitor is connected.

NOTE: The heart rate monitor is not included. Wireless heart rate function works with SunnyFit Heart Rate Monitor HR200. HR200 can only connect to the computer when the wireless heart rate icon is flashing.

KEY FUNCTION:

MODE/SELECT: To select the function you want. Hold the key for 3 seconds to reset values CNT TIME CAL except TOT when the Bluetooth is not connected.

Press and hold the MODE key for 6 seconds to disconnect from both the SunnyFit APP and the heart rate monitor; then, the meter will enter sleep mode.

AUTO ON/OFF: The meter will be turned on automatically when exercise starts or the key pressed. The meter will shut off automatically and disconnect the heart rate monitor if there is no activity for 4 minutes when the Bluetooth is not connected.

FUNCTIONS:

TIME: Display the total time since the exercise started

CNT: Display the steps count while exercising.

CAL (CALORIES): Display the total calories burned while exercising.

TOT CNT: Display the total steps of all your sessions. The Total Count will be reset once you replace/disconnect the battery.

SCAN: Press the button to select "scan". This function will automatically scan through TIME, CALORIES, TOTAL COUNT and P (PULSE) displayed on the bottom of the monitor.

P (PULSE): Display current heart rate value. The data comes from the matching Bluetooth heart rate monitor.

NOTE: The information displayed is an estimate only. Actual values may vary depending on factors such as body weight, resistance level, workout intensity, and other individual conditions. This information is provided for reference purposes only and should not be used for medical or dietary purposes.

SPECIFICATIONS:

CNT -----	0-9999 TIMES
TIME -----	00:00-99:59 MIN: SEC
CAL (CALORIES) -----	0-9999 KCAL
TOT.CNT (TOTAL COUNT) -----	0-9999 TIMES
P (PULSE) -----	40-240BPM

NOTE: Please replace the battery when the meter does not display properly.

APP CONNECTION

Connect Smart Equipment to SUNNYFIT App:

1. Scan to download SUNNYFIT from the app store:



2. Ensure that the Bluetooth function is turned on from your mobile device.
3. If this is your first time using the SUNNYFIT app, follow the in-app instructions to register for your free SUNNYFIT account and log in.
4. Begin any workout activity that matches your smart equipment, then follow the onscreen prompts to search for and connect to your smart equipment.
5. When connected, your stats and records will be displayed at the end of your course/session, and recorded in your account profile!

TROUBLESHOOTING

- If you are having trouble connecting your smart equipment, visit www.sunnyfit.com/guide or scan the QR code below:



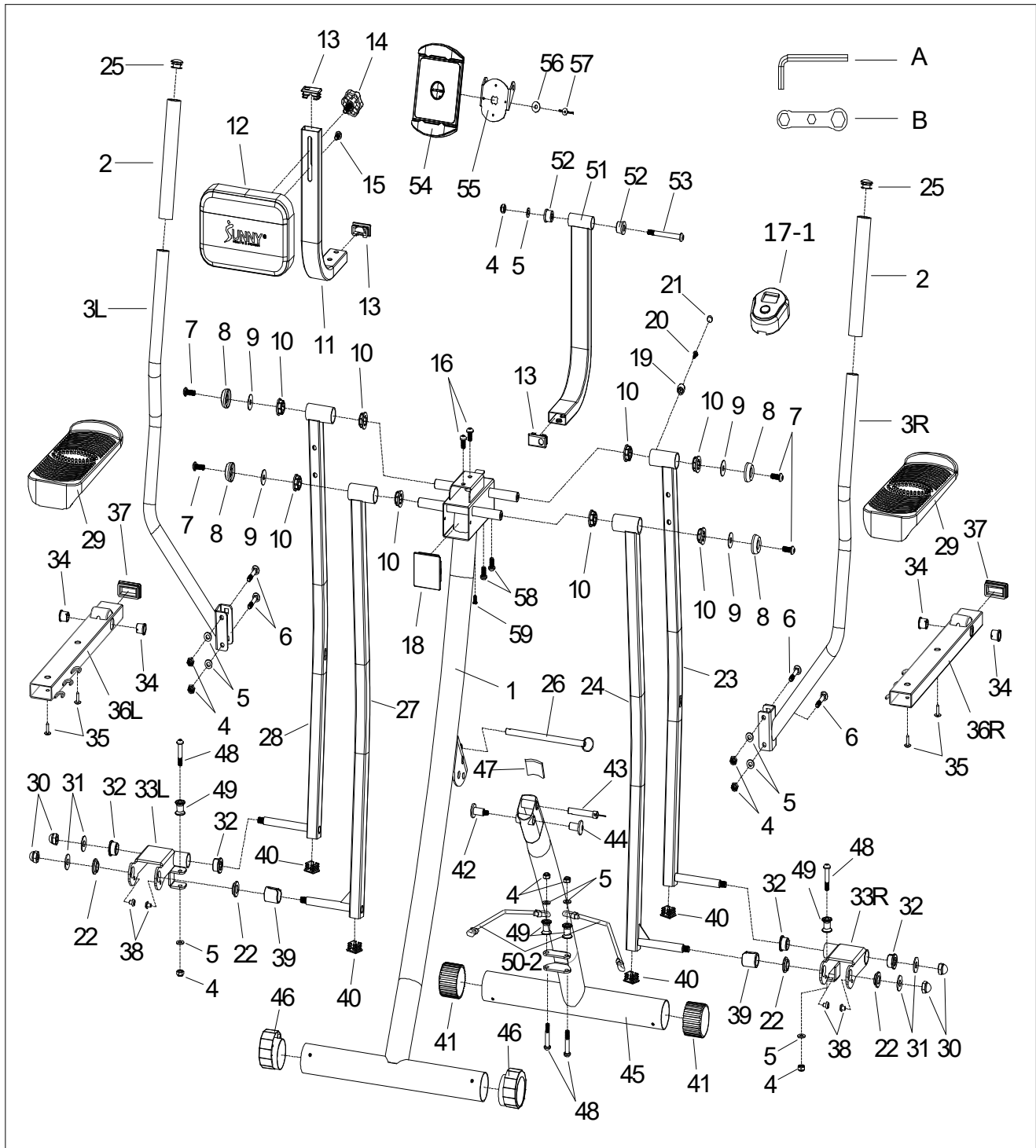
- If you require additional support, please contact support@sunnyfit.com.

Parts List

No.	Description	Spec.	Qty.
1	Main Frame		1
2	Sponge	φ29*φ23*200	2
3L	Left Handlebar		1
3R	Right Handlebar		1
4	Nut	M8	10
5	Washer	φ8.2*φ16*1.5	10
6	Bolt	M8*42	4
7	Screw	M8*20	4
8	Bolt Cap		4
9	Washer	φ8.2*φ25*1.5	4
10	Bearing Sleeve		8
11	Support Tube		1
12	Chest Pad		1
13	Plug	F20*40*1.5	3
14	Knob	M8*30	1
15	Screw	M8*15	1
16	Allen Screw	M8*16	2
17-1	Meter	JJD2601	1
18	Plug	F60*60*2.0	1
19	Magnet Bracket		1
20	Screw	M3	1
21	Magnet		1
22	Cap		4
23	Right Front Tube		1
24	Right Rear Tube		1
25	Plug	φ25*1.5	2
26	Ball Pin	φ10*180	1
27	Left Rear Tube		1
28	Left Front Tube		1
29	Pedal		2
30	Nut	M10	4
31	Washer	φ10.5*φ26*2.0	4
32	Bearing Sleeve		4
33L	Left Pedal Connector		1

No.	Description	Spec.	Qty.
33R	Right Pedal Connector		1
34	Bearing Sleeve		4
35	Screw	ST4.8*20	4
36L	Left Pedal Tube		1
36R	Right Pedal Tube		1
37	Plug	F25*50*1.5	2
38	Stopper		4
39	Connecting Sleeve		2
40	Plug	F25*25*2.0	4
41	Front Cap	φ50	2
42	Bolt	φ12*32.5, M8	1
43	Ball Pin	φ10*66.5	1
44	Bolt	φ12*22.5, M8	1
45	Connecting Tube		1
46	Adjustable Cap	φ50	2
47	EVA Pad		1
48	Bolt	M8*40	5
49	Wheel	φ21*φ8.1*22	5
50-2	Resistance Band	φ8*360	4
51	Device Holder Support Tube		1
52	Sleeve	φ22	2
53	Bolt	M8*75	1
54	Device Holder		1
55	Device Holder Fix Plate		1
56	Flat Washer	φ6.4*φ18*1.2	1
57	Nut	M6	1
58	Bolt	M8*16	2
59	Bolt	M5*12	1
60	Rubber Cushion	20*40*2.0	2
A	Allen Key	S6	1
B	Wrench	S10-13-17	1
C	Battery	AA	2
D	User Manual		1

Exploded Diagram



Version 1.3

Register

Register your product and verify warranty terms:

Sunnyhealthfitness.com/warranty



Download

Track your fitness progress & join **FREE** workout courses!

Download SUNNYFIT App today!



Follow

Find us on social media



Contact

Get in touch with us for any questions

📞 1-877-90SUNNY (877-907-8669)

✉️ support@sunnyhealthfitness.com

www.sunnyhealthfitness.com